



Nutley Family Service Bureau 2014 Annual Report

Dear Stakeholders and NFSB Supporters,

Executive Director

Felicia Gardner

NFSB Board President

Mary C. Graves

1st Vice President

Edward Tyerman

2nd Vice President

Emma Cortese

Secretary

Maria Pedalino

Treasurer

Jim Kuchta

Trustees

Rula Abuaijuda

Ruth Bedford

Rudy Chen

Linda Grossman

Kevin Haszko

Adam Jernick

Angela Kircher

Theresa Loch

Becky Olivo

Vicki Ray

Javier Robles

Karen Rozansky

Lisa Vallo

Township Representative

Ruth Bedford

Thrift Shop Representative

Angela Kircher

Building & Properties

Carmine Ucci

The year 2014 has been one of much growth with regard to both NFSB's Board of Trustees and agency programming. The following presents an overall summary of our successes and services. Our staff is more empowered to work autonomously in a variety of ways that demonstrate how far NFSB has come in the past four years. We are a diverse staff, serving a wide variety of clients and entities. The following highlights our major community offerings and goals.

Staffing to the Nutley Senior Residences increased; particularly at Nutley Senior Manor, staff provided 6 hours weekly in the form of case management, counseling, social support, psychoeducation and referral to staff and clients alike. Parkside Apartments contract continues, which includes on site staff support, free psychotherapy and medication management to clients in need and group and crisis intervention on an ongoing basis.

The process of income verification for clients seeking food pantry provisions at one of the three township food pantries is ongoing. Walk-in and telephone case management, referrals or crisis counseling five days per week from 9-9, as well as Saturday hours (which are 10-2 on the first and third Saturdays of each month) continue.

There was a robust roster of 248 active psychotherapy clients as of December 30, 2014, with a growing number of intakes monthly. Approximately 420 face to face sessions per month of individual, family or couple's treatment were conducted. This activity represents an increased overall caseload from last year, and resulted in third party insurance carriers and sliding scale fees which yielded approximately \$352,000.

A variety of free for Nutley groups are offered as part of community outreach. These include a free weekly women's group and age-designated social skills groups for children, ages 6-12. Approximately 30 children participated, and several transitioned to family or individual play therapy upon group completion. We continue our free Teen Leadership Series for girls on a weekly basis; a major activity for this group includes planting garden beds with a goal of donating the crop to the local pantries.

The medication management program continues, with a psychiatric, advanced practice nurse, APN, who provides an initial psychiatric evaluation and ongoing management to 70+ clients. These clients seek her services due to a range of mental health issues, including but not limited to depression, post-traumatic stress disorder, anxiety, bipolar illness and attention deficit disorder.

In keeping with characteristic responsiveness to community needs, as 2014 closed, plans were being formulated for an early intervention program for

155 Chestnut Street
Nutley, NJ 07110
(973) 667-1884 Tel
(973) 667-2285 Fax
nutleyfamily.com

Nutley youth. The NET (Nutley Empowering Teens) focuses on teens at risk for a range of negative social and personal behaviors. It is being advised and supported by Nutley school personnel, municipal officials, NPD representation and NFSB staff expertise.

Our public support continues to be in the form of a generous Nutley Township grant of \$65,000, our Annual Fund Appeal mailing, and \$12,000 from our long-term supporter, The Greater Newark Holiday Fund. A fundraising effort in September, our 4th Party in the Park at Nanina's Restaurant, yielded \$18,000 for general operations. The Thrift Shop sales yielded an amazing \$70,000 and it continues to be completely volunteer- led and run. These financial resources were certainly put to good use, as 86% of all expenses went to providing programming for our clients and the community.

The 2014 Board of Trustees embarked on a strategic planning process to solidify our vision and clarify a 3-5 year plan. The task force, (comprised of board members, staff and community representation), canvassed the community with face-to-face interviews and analysis of data. It is anticipated that the strategic plan, which is in the final stage of development as of this report, will result in a revitalized mission/ vision statement and corresponding action-based objectives.

NFSB has become even more solidly grounded in community awareness and diverse expertise while maintaining professional operational guidance of experienced social service and mental health clinical staff. Further, feedback from clients/ community supporters as well as evidence-based approaches are used to ensure state regulated services are being provided with checks and balances on a regular basis.

NFSB moves forward every day toward exciting new initiatives to serve seniors, teens, disabled and mentally ill clients and does so now, with a more informed impetus through stakeholder perspective and community partnership. We look forward to growing responsive programming and services, buoyed by community support, a strong agency/board of trustees dynamic, and insights gained through the past year. We thank each and every supporter and client, all township stakeholders and advisors and look forward to solidifying our vision and community impact with your help and confidence.

With hope and gratitude,

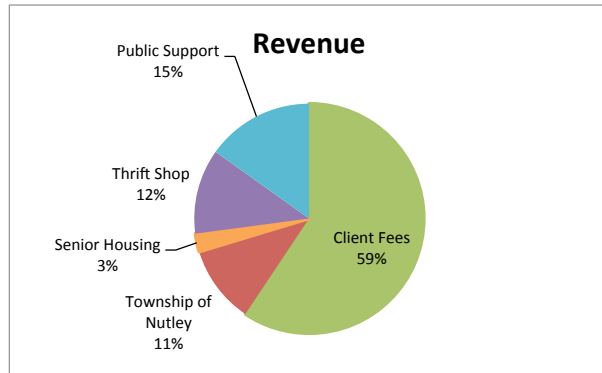
A handwritten signature in cursive script that reads "Felicia Gardner". The signature is written in dark ink and has a fluid, elegant style with a long, sweeping underline.

Felicia Gardner, LCSW
Executive Director

NUTLEY FAMILY SERVICE BUREAU, INC.

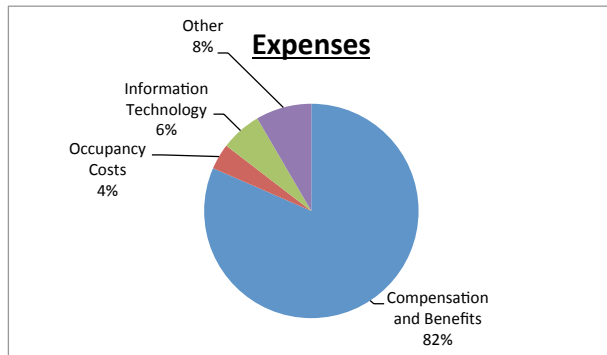
2014 Financial Report

INDEPENDENT ACCOUNTANTS' REPORT



Revenue

Client Fees	\$ 352,073
Township of Nutley	\$ 65,000
Senior Housing	\$ 15,243
Thrift Shop	\$ 70,963
Public Support	\$ 89,793
Total Revenue	\$ 593,072



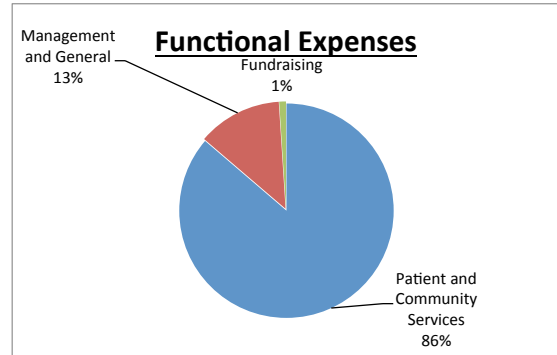
Expenses

Compensation and Benefits	\$ 378,617
Occupancy Costs	\$ 18,069
Information Technology	\$ 28,619
Other	\$ 39,100
Total Expenses	\$ 464,405

NOTE:

The total expenses do not include the equivalent cost of the supervised interns providing patient and community services, which are estimated to be approximately \$55,000.

UNAUDITED EXPENSE DISTRIBUTION



Functional Expenses

Patient and Community Services	\$ 400,649
Management and General	\$ 59,066
Fundraising	\$ 4,690
Total Expenses	\$ 464,405

A sincere Thank You to our Public Supporters: Your generous support ensures our staff and programs are available to help those needing mental health and social services. We are especially grateful to our faithful, multi-year contributors.

Over 350 individuals, groups, and companies contributed in 2014, including:

Annual Fund & other contributions	
\$10,000+	Ruth Bedford
	Vince & Carol LoCurcio
	Greater Newark Holiday Fund
\$1000-4,999	Mary & Brad Graves
	Roy and Jacqueline Imhoff
	Kozyra and Hartz, LLC
	Liquid Church
	Kathleen Metzger
	Morgan Stanley Foundation
\$500-999	Nutley Clergy Fellowship
	Nutley Lions Club
	James & Vicki Ray
	St. Mary's Church
	Ed Tyerman
\$200-499	Keith Banks
	Mr & Mrs Michael Cocco
	Joanna Conrad
	Dr & Mrs Louis Crupi
	John Farr
	George & Maureen Jones
	Timothy & Jacqueline Keating
	Kozyra Family
	Barbara Lyall
	Robert & Mary Ann Manfredi
	Patrick McIntyre
	Christopher McKee
	Silas Mountsier
	Nutley Little Theatre
	Javier Robles
	Karen Rozansky
	Walter Sautter
	Thomas Stone, Jr
	Unico National-Nutley Chapter
	United Way of Essex & W. Hudson
Less than \$200	302 donors

[illegible]

News and Media Events of 2014

(Full articles and press releases can be found at [www.nutleyfamily.com/News and Events](http://www.nutleyfamily.com/News%20and%20Events))



The expansive article “NFSB Hard at Work in Nutley” in *The Nutley Journal* featured the agency’s commitment to community and broad range of programs. “ [Read more](#)



In a *Nutley Sun* Letter to the Editor, Commissioner Steve Rogers praises the community work of the agency. “A job well done.” [Read more](#)



In a *Nutley Sun* Letter to the Editor, NFSB Trustee Rodolph Chen extends appreciation for township support of the Holiday Party hosted by NFSB at Vincent United Methodist Church. [Read more](#)



NFSB is proud to be among the social service agencies of Northern New Jersey that receives support from The Greater Newark Holiday Fund. Two cases from NFSB are highlighted in the *Newark Star Ledger*. [Read more](#)



NFSB Party In The Park fundraiser announcement mention in *Nutley Sun*. -The charity event supports many of the programs offered at the agency. [Read more](#)

Many thanks from Thrift Shop:

- For all the years of service from our dedicated volunteers
- For the donations from our neighbors
- For the customers who shop with us

- 100% proceeds go to NFSB programs & operations
- 100% staffed by dedicated volunteers

Testimonials from NFSB clients in 2014:

“We feel the safety, security and the pure commitment made by our family therapist. She has made a huge difference in our lives. I am so glad that such resources are available in the area. ” - NFSB Client

“It is one of the few great mental health services that WORK even for those who may not be able to pay much. I greatly appreciate the efforts they make to accommodate my need for care with my income situation. ”- NFSB Client

“NFSB gives me [the] strength to go on living as a normal functioning human being. The doctor, therapists and staff are kind and understanding and work toward my recovery with me. I don’t know what I would have done if they had not been there to help me in my time of need.” - NFSB Client

“I have help and guidance with the difficulties life sometimes presents us with. It means a transition phase that will help me learn about who I really am so I can be a better daughter, mother, friend and a better person. In all, I hope to be more serene and decisive once I’m done with therapy at NFSB.” - NFSB Client

“Being here made me realize that having someone to talk to isn’t so bad and that opening up is the best way to be understood. Nutley Family Service Bureau has showed me that there is nothing wrong with getting a little help.” - NFSB Client